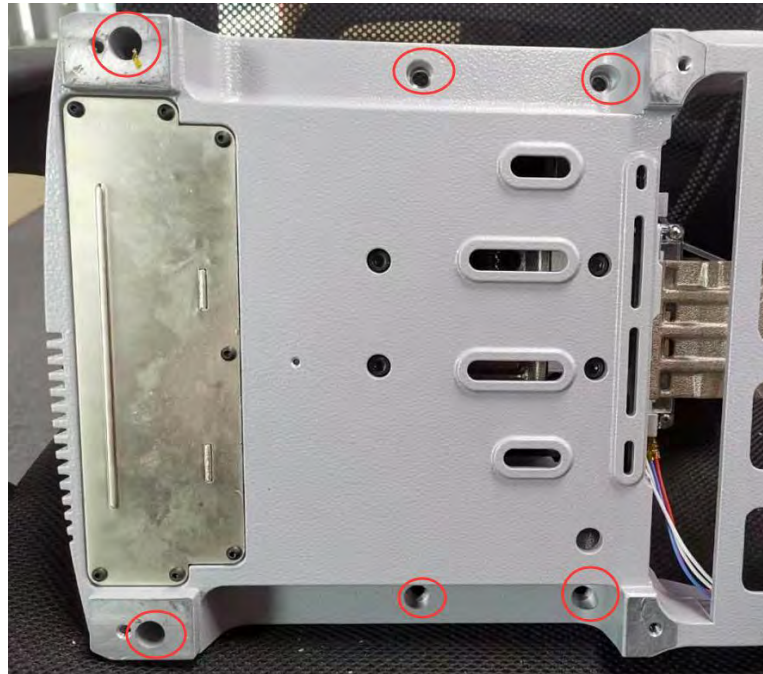
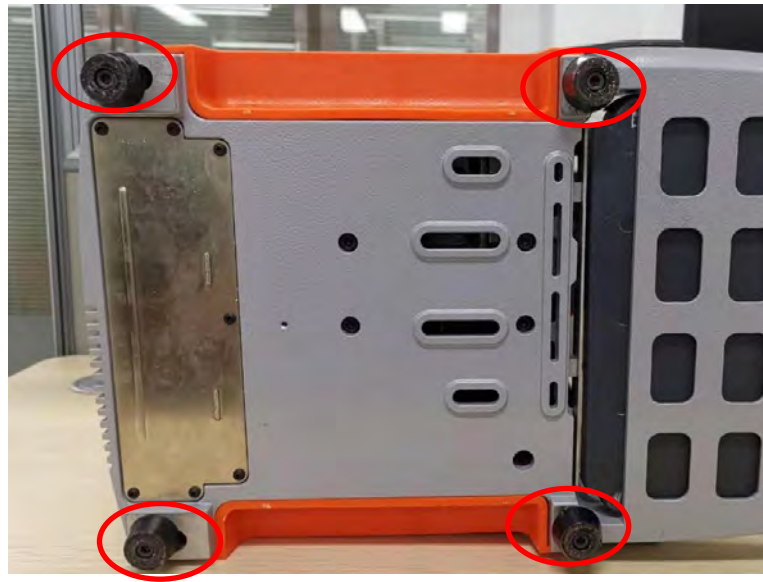




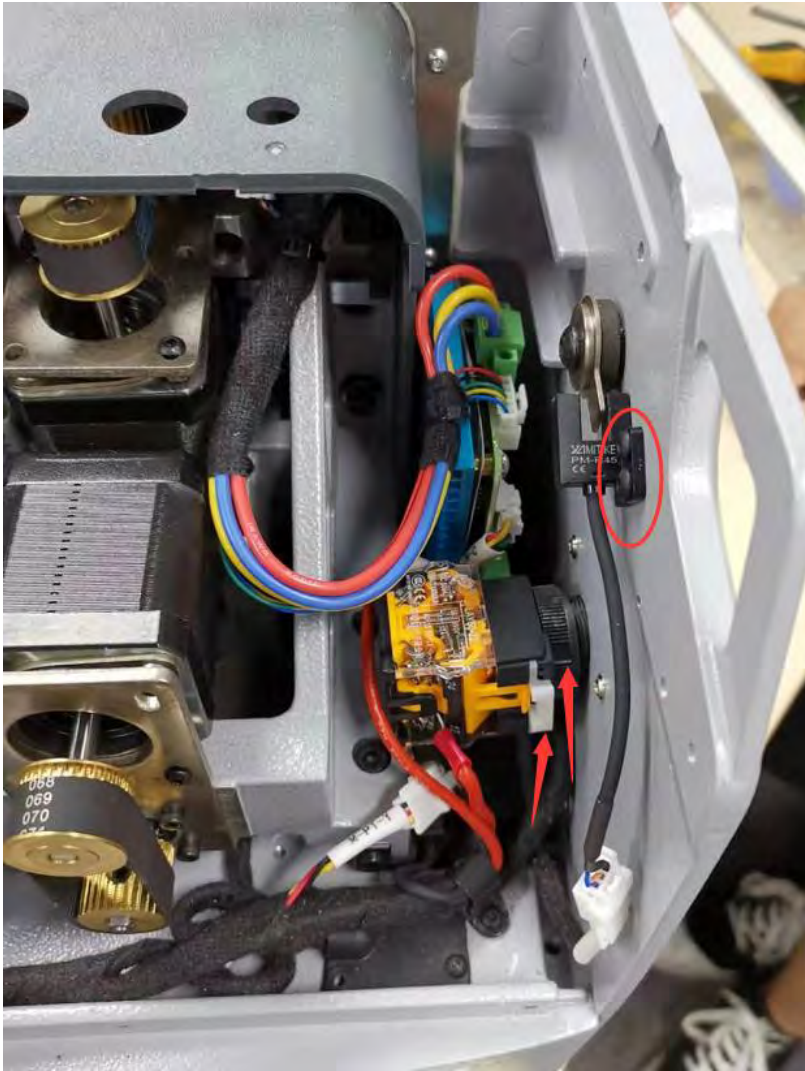
Take all screws like picture show ,and remove the protective shell , screen module , side accessories



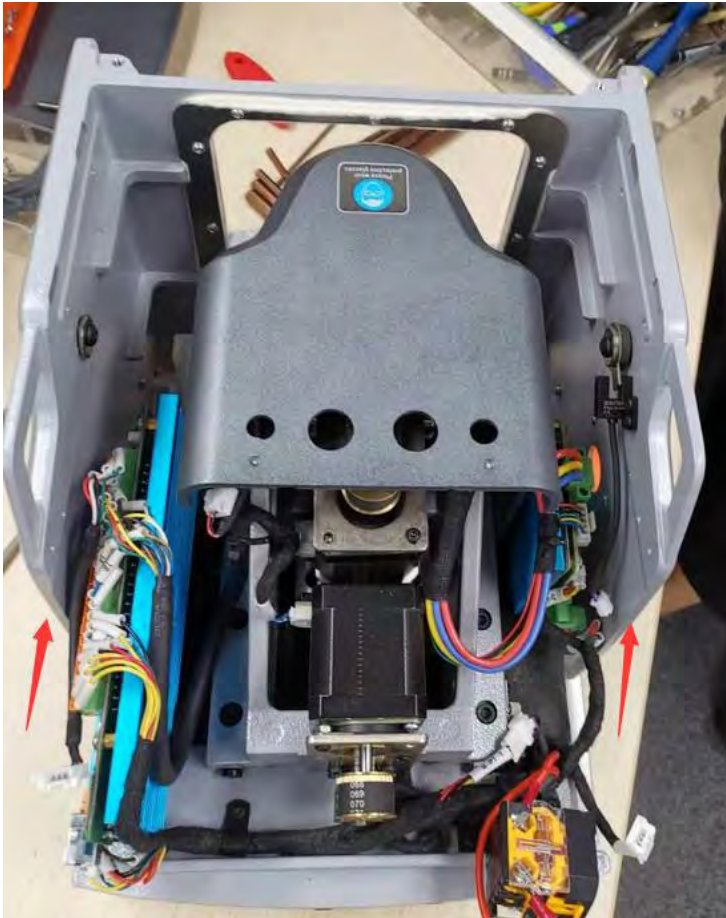
Take out the iron filing trough and take out all screw like picture show above



Turn over the machine like picture show and remove the foot base and 6 screws

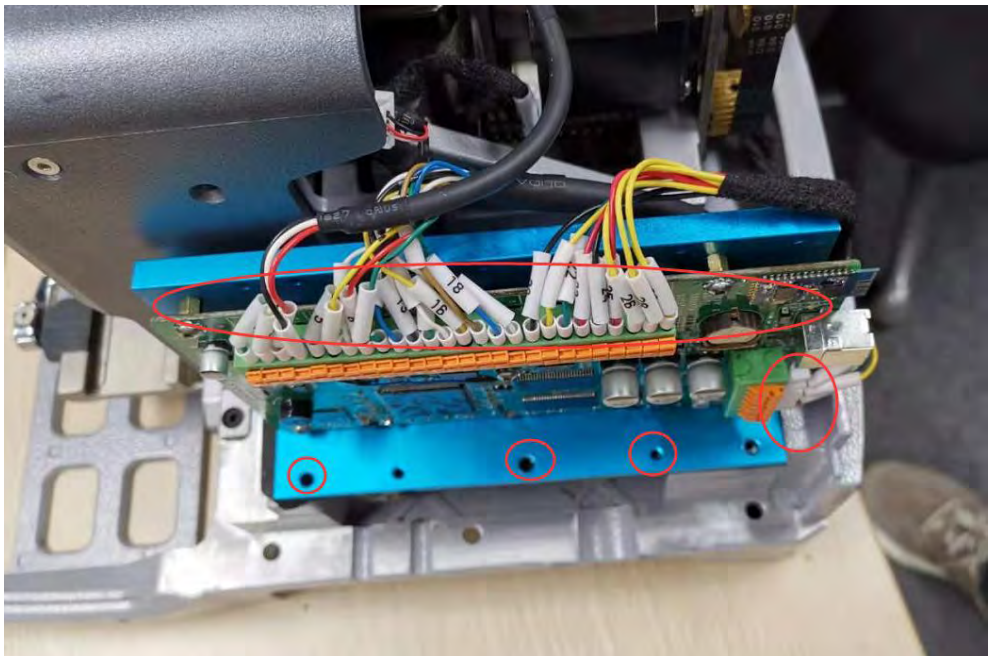


Take out the 2 screws in the sensor of protective shell and pull the white buckle to disconnect the switch button then loose the right buckle for take out the switch button , the red arrow is point to the buckles of switch button



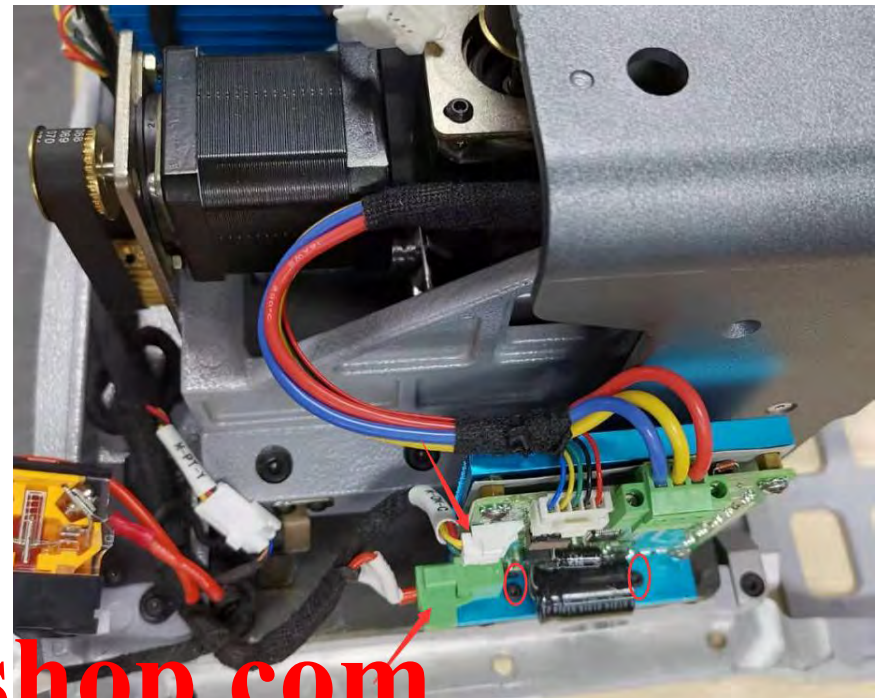
Push the chassis for remove it like
picture show

www.vvdishop.com

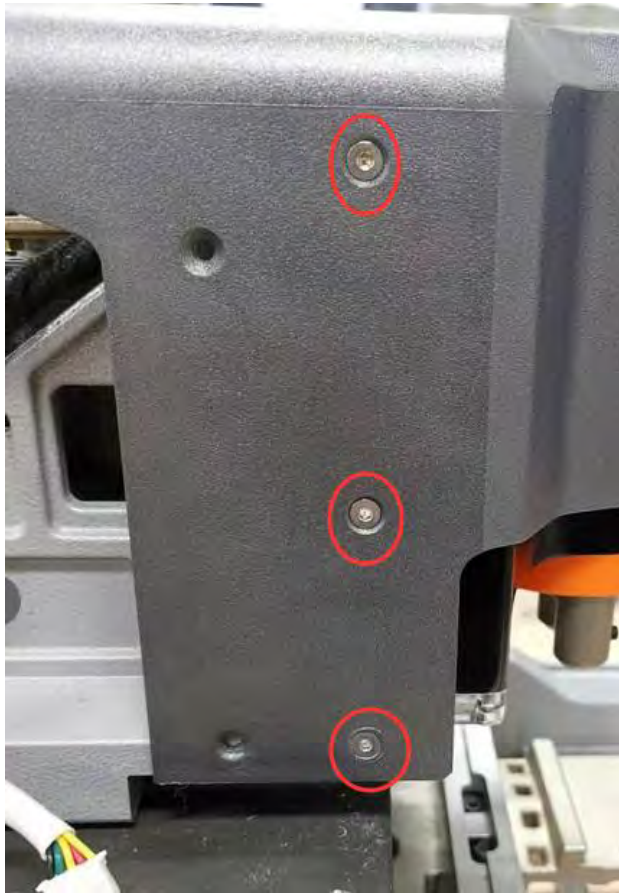


Unplug all pins on and 3 screws for remove the mainboard

Unplug those 2 cable like the picture show where the red arrow point to, and take out 2 screws for remove the driver board

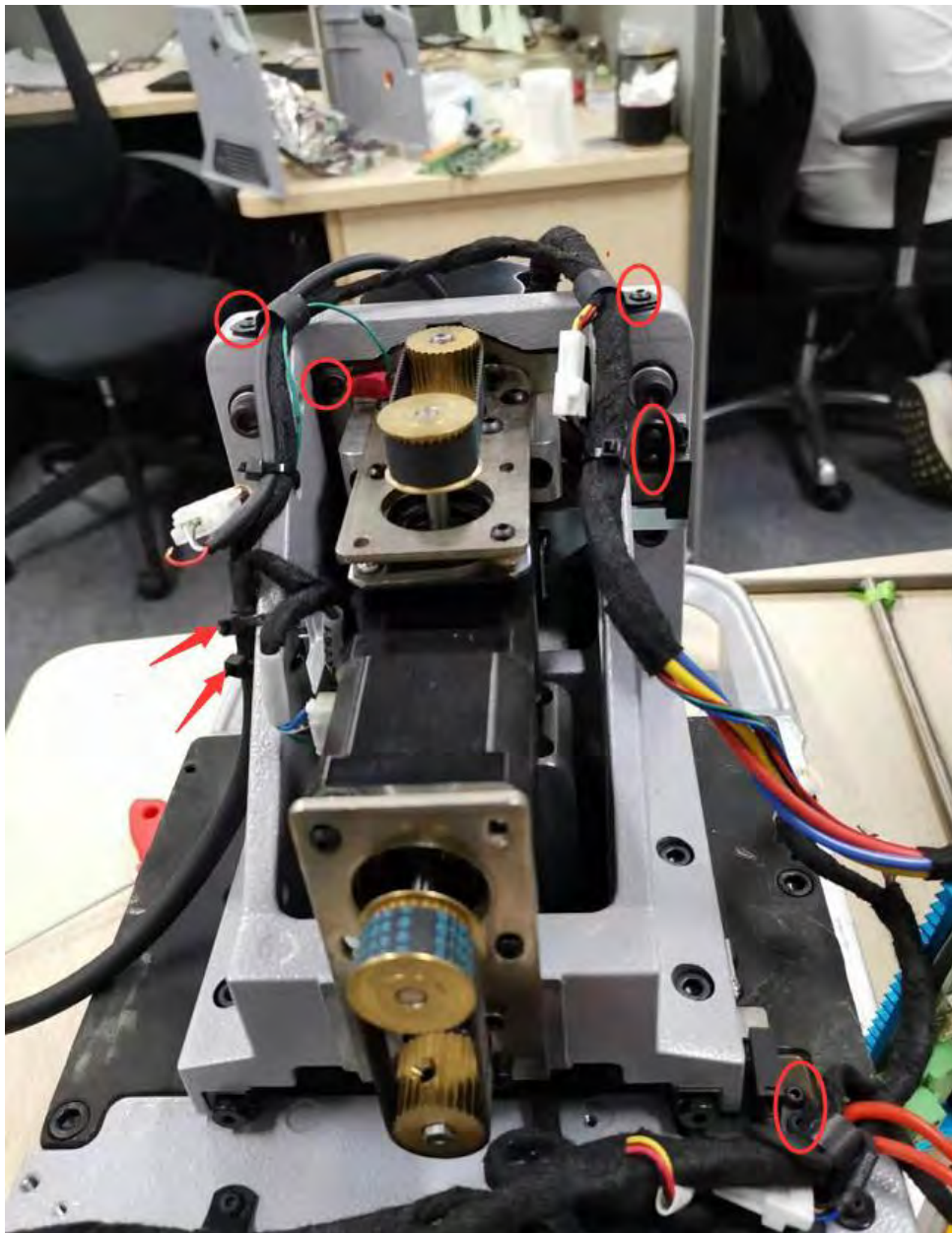


www.vvdishop.com

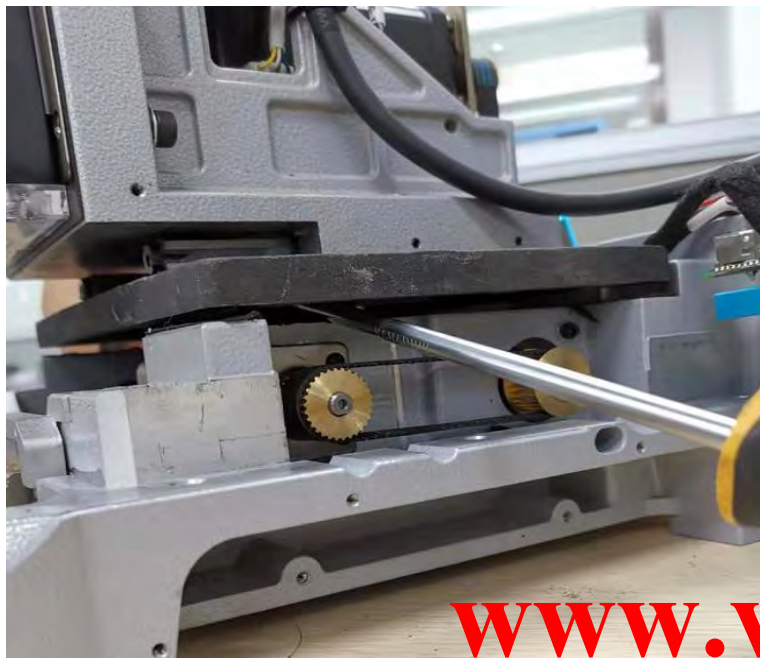
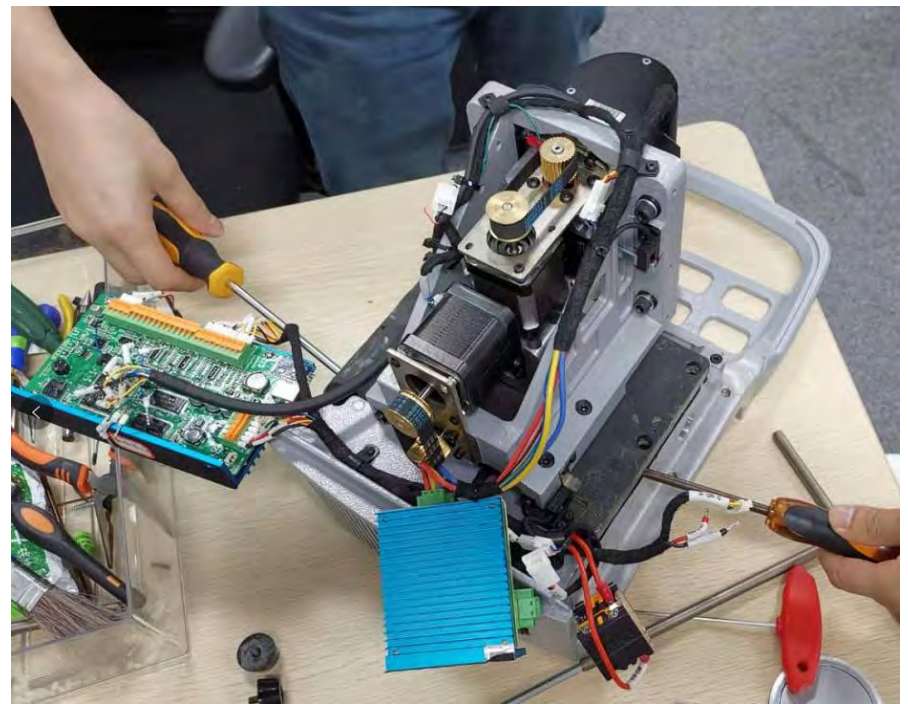
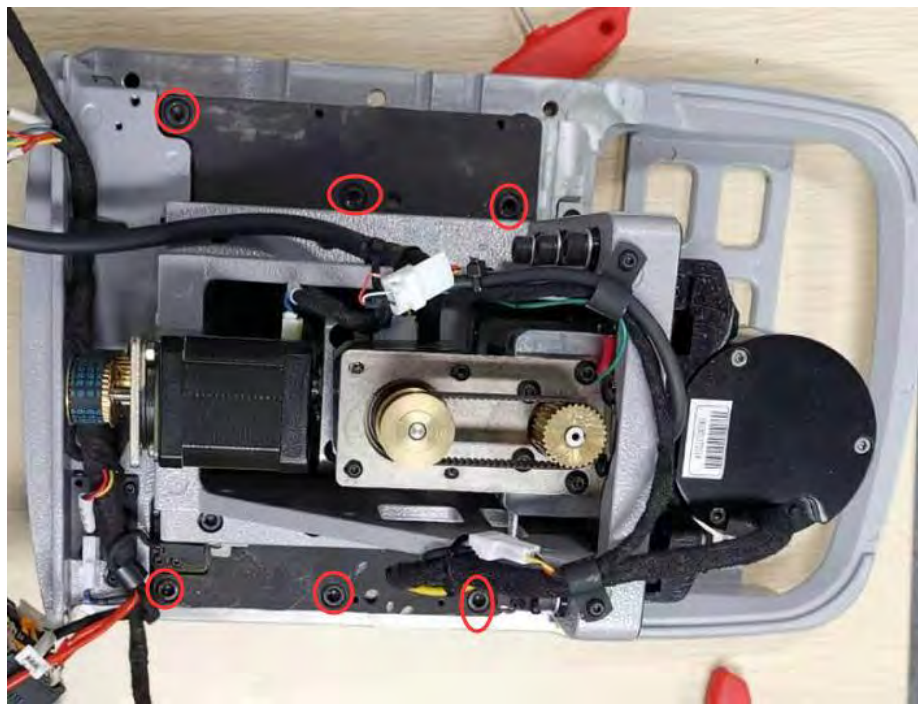


Take out those 6 screws for remove the shell of main motor

www.vvdishop.com

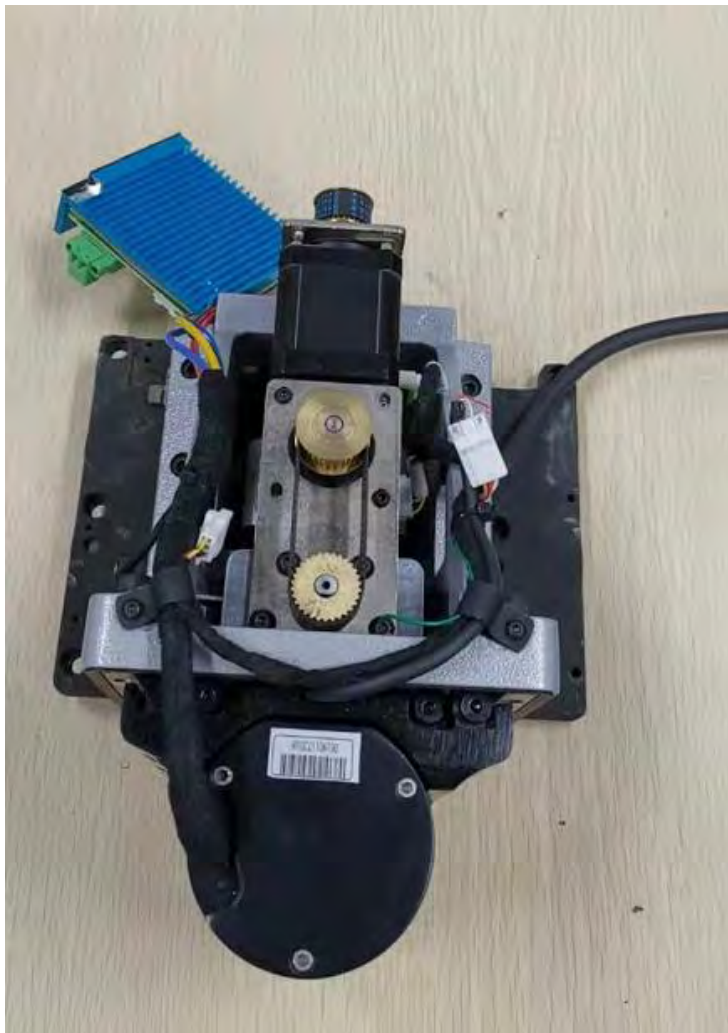


Take out the screws like mark it with red circle for remove the cable fixture and sensors ,and also cut the cable tie for release those cables



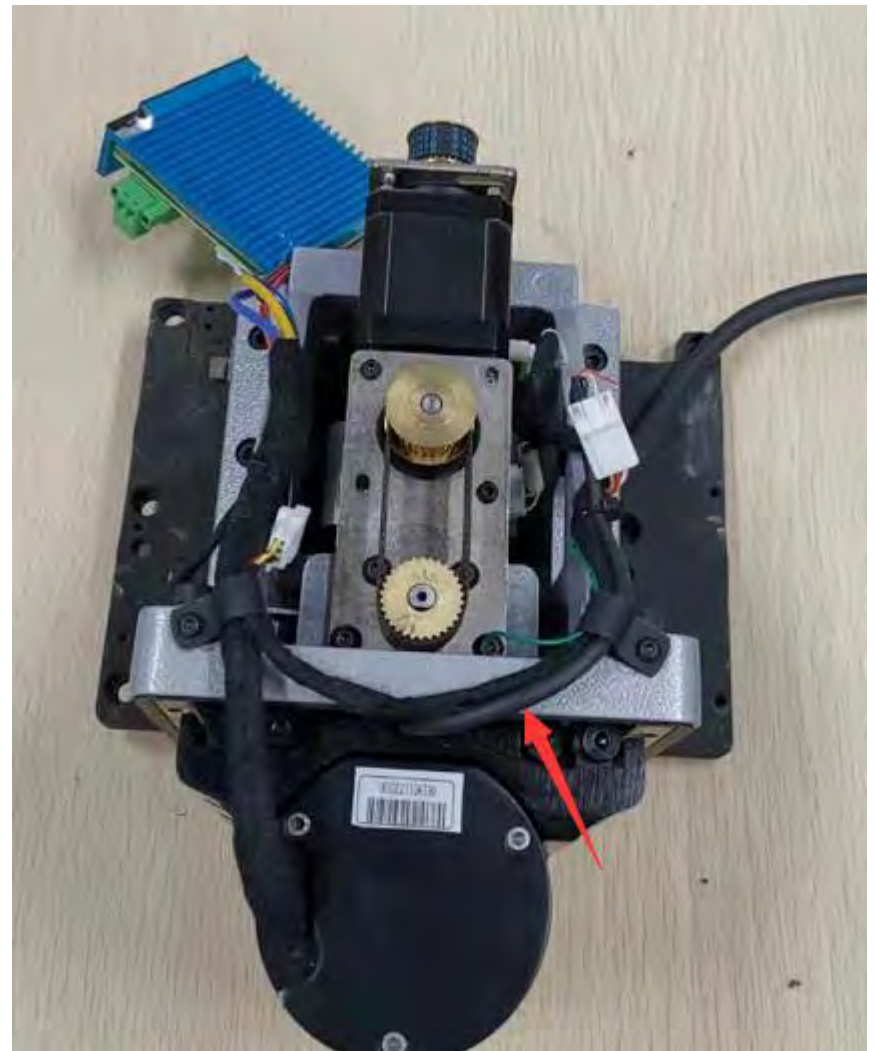
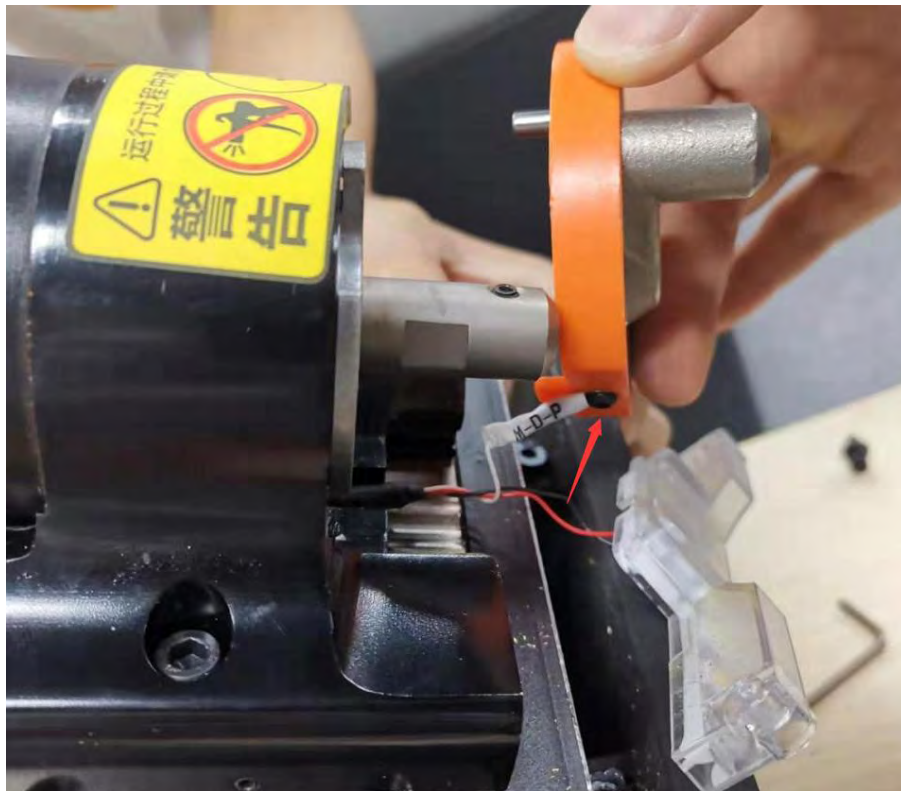
Take out the 6 screws and use 2 screwdriver to insert the gap between the motor part and base like picture

www.vvdishop.com



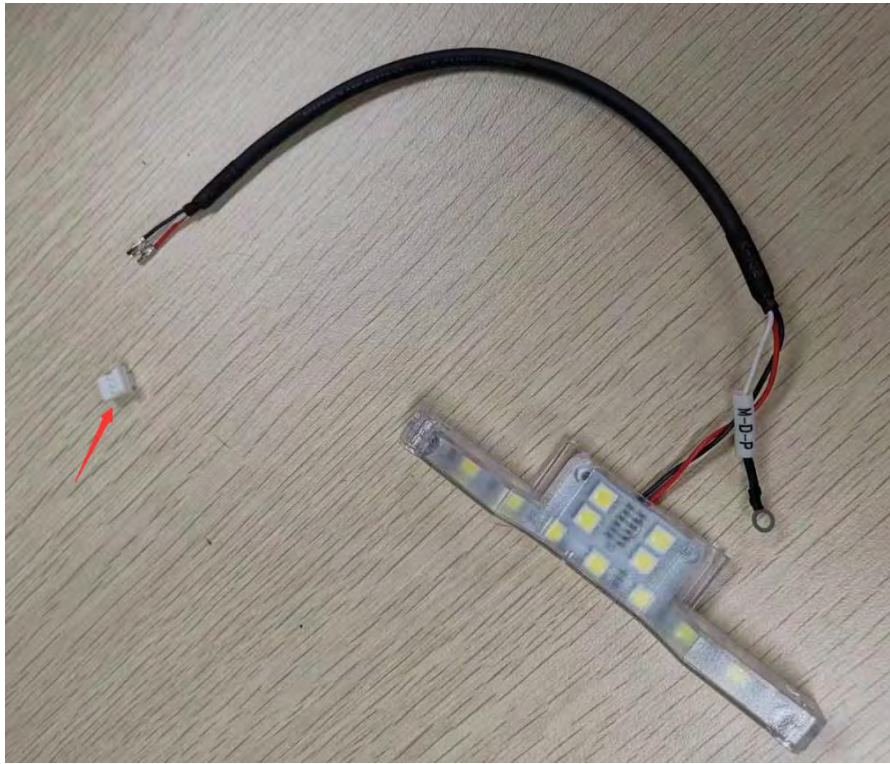
Take out the whole motor part and take out the screws like picture show for remove the led bar and mounting plate of probe

www.vvdishop.com

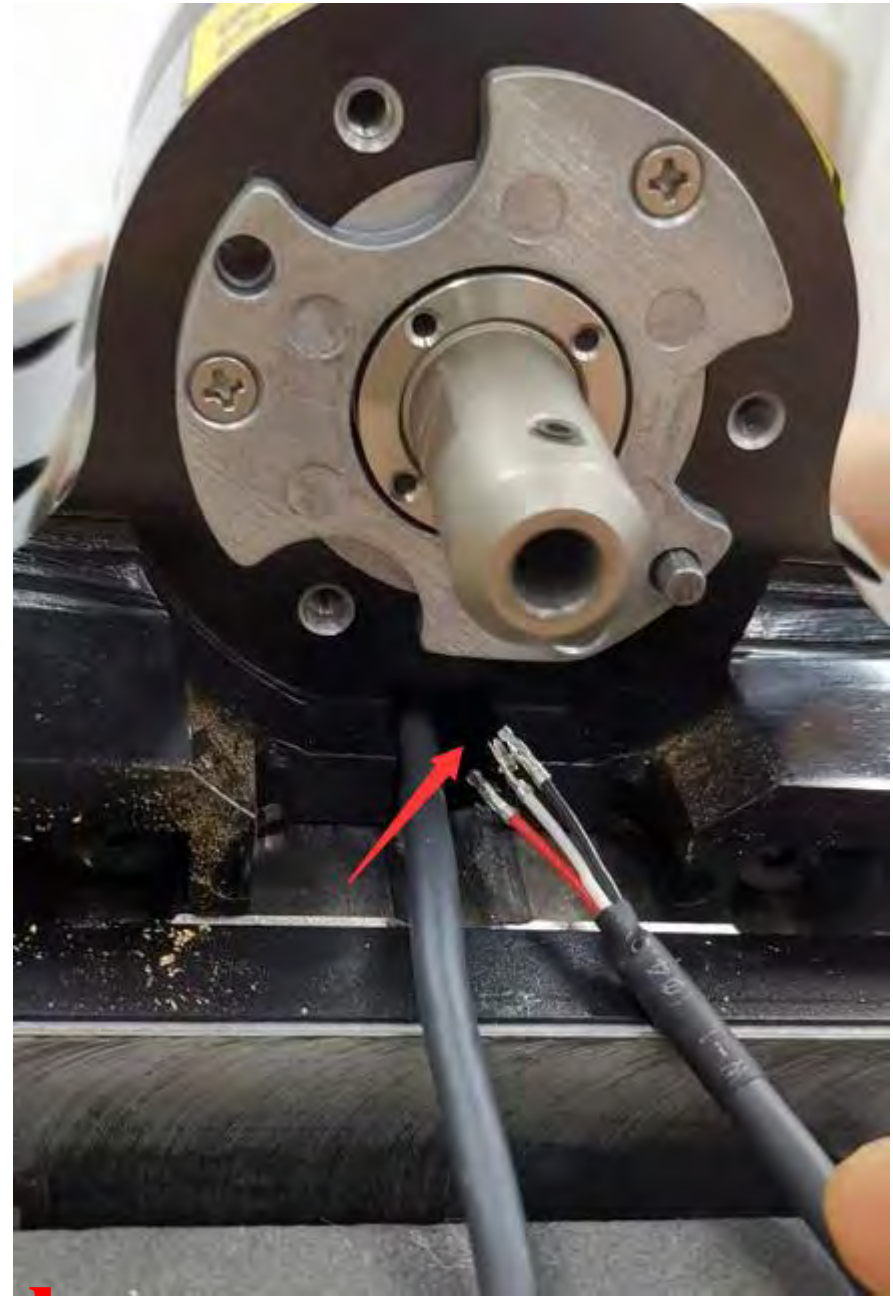


Take out the screw of the cable M-D-P and cut the cable like right picture show , then pull the led bar for take out the whole cable

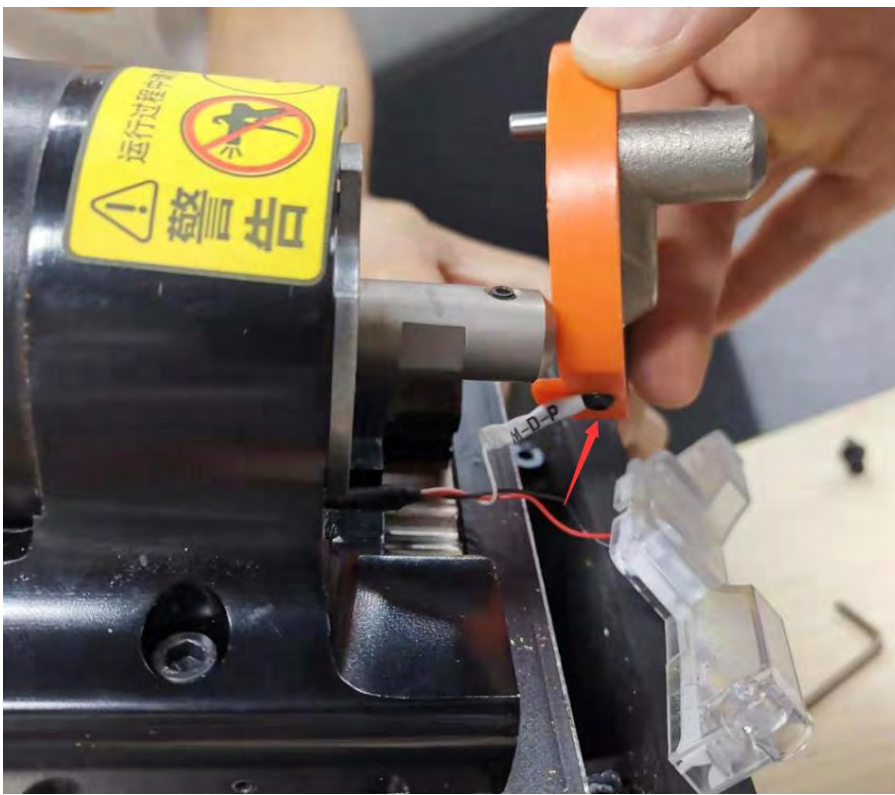
www.vvdishop.com



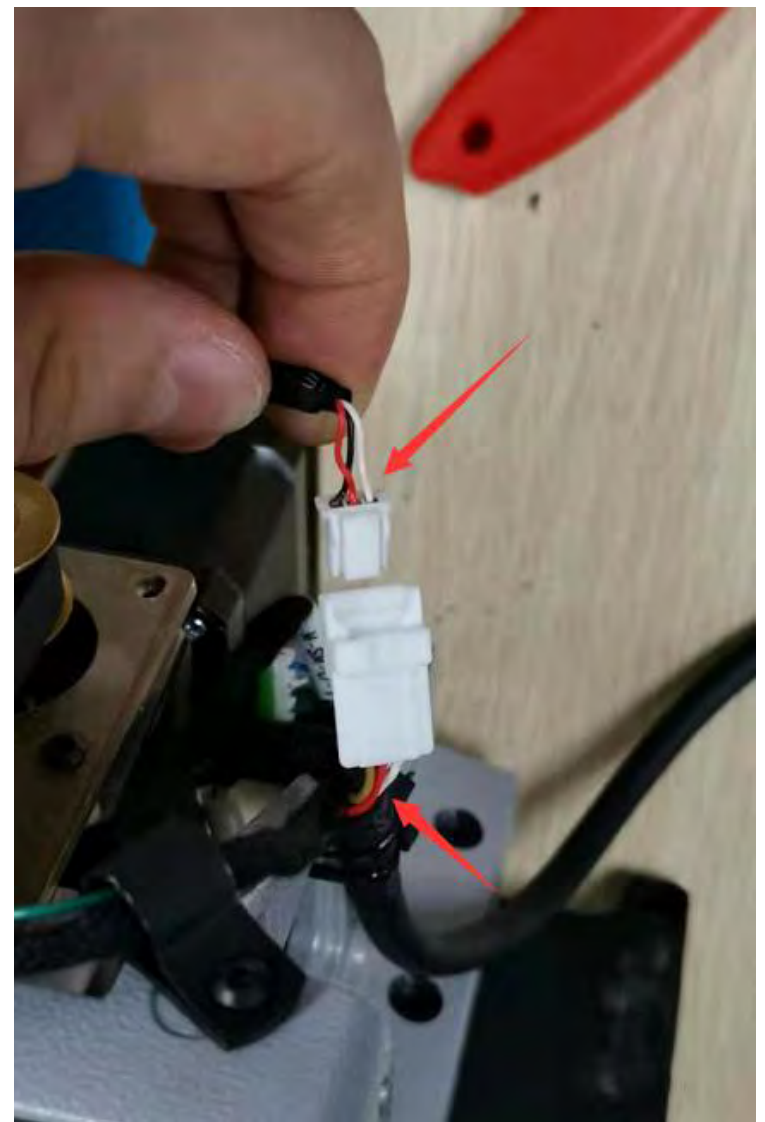
Take the led bad and cable what I send you like the left picture and insert the cable in that hole and through it to another side



www.vvdishop.com

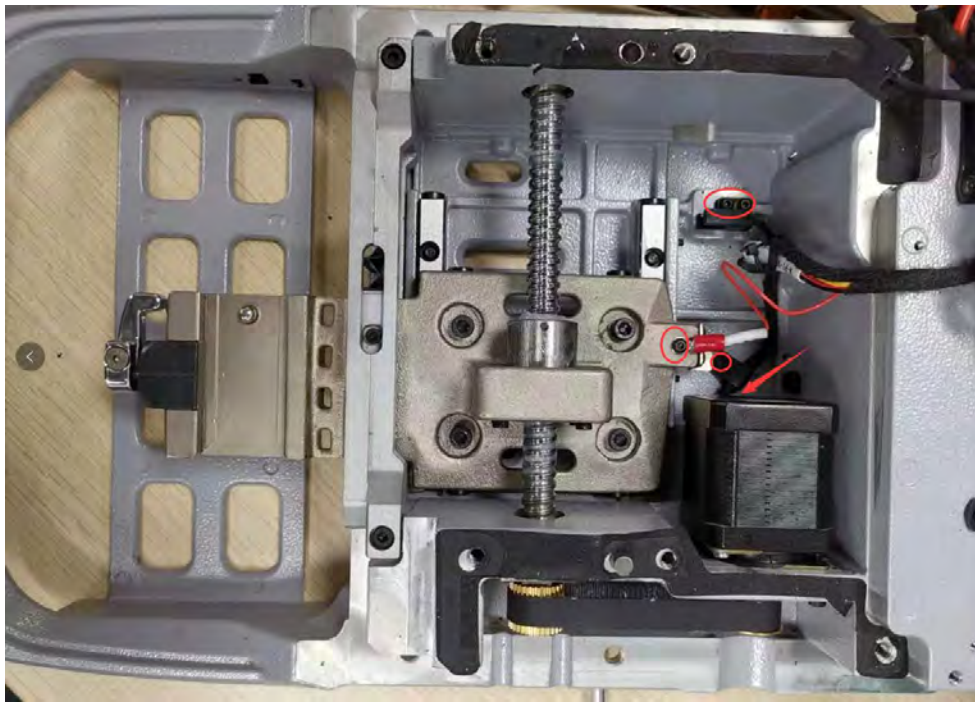


Fix the M-D-P cable after insert the whole cable and fix back the mounting plate of probe and led bar ,first fix back the plate then fix the led bar , then white part mark with 'M-D-P' should be in the hole and can not twist or bend it , you can pull the cable in another side for fix that



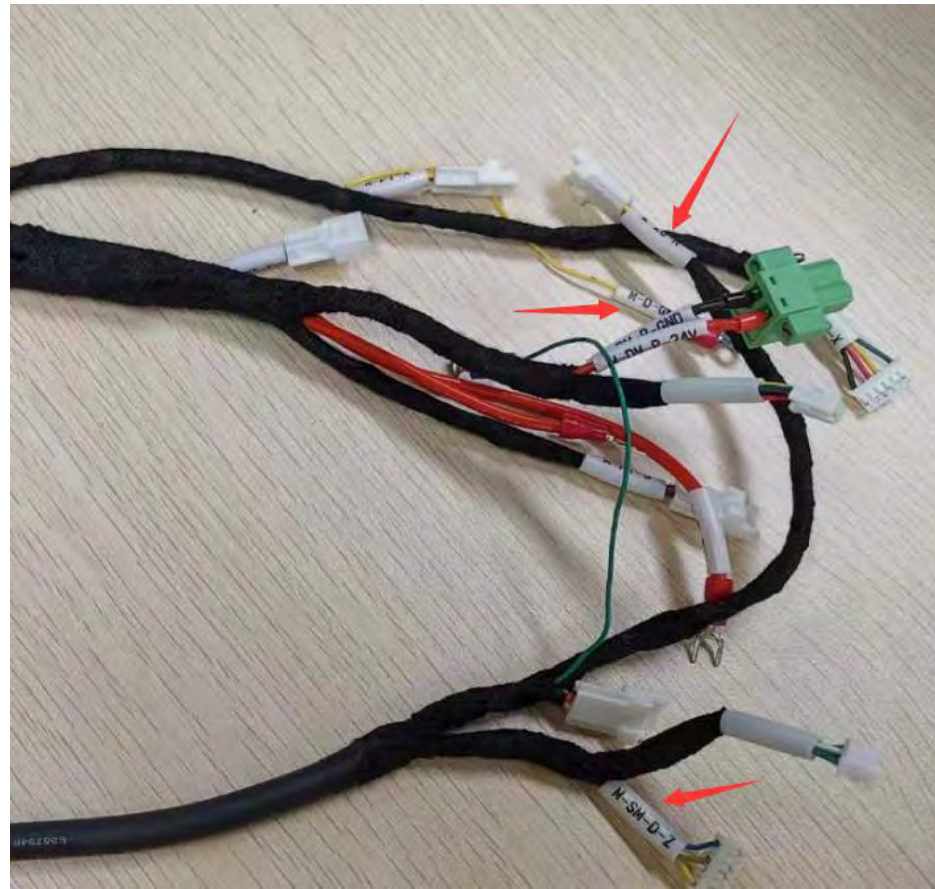
Also fix the socket to the cable according to the definition of cable , or you can do it like picture show ,

www.vvdishop.com



Take out all screws for remove the cable fixture and cables and start to fix all cables back

www.vvdishop.com



Left picture is the sensor and right picture are 2 cable cluster , it has mark for each small cable , insert every cable according to the mark also you can take some photos before you unplug the old cable

www.vvdishop.com

And also for the mainboard that has mark what is suit the mark of wires

And about fix back the cables ,cable fixture ,sensors ,and cable tie , you can take the photo of original one before what it is look likes ,also pls do the calibration of motors and electrical of conductivity , after you fix back all thins

